

trek4x4

Optional Lift Up or Slide Side Windows

75kg roof rails are standard
Or optional \$POA
- Trek Cross Bars
- Trek Flat Rack

Front Sliding Window

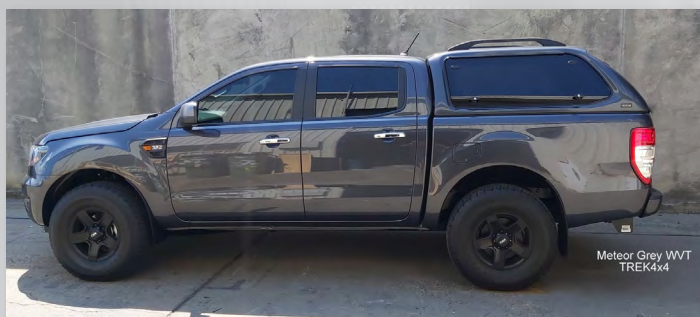
Interior Carpet Lining

Colour Coded

Central Locking
Rear Door
(Wired to your vehicle's system)

Highset Brake Light

Interior LED Light

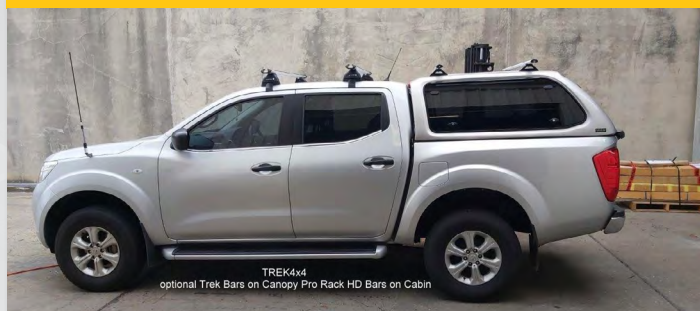


TREK CANOPY TO SUIT: FORD RANGER PX 2011+

Trek 4x4 Ute Canopy Standard Features:

- Central lock on tailgate - integrated with your ute's locking system.
- 75kg roof rails (other rack options available).
- 6 point clamp on system - no drilling required.
- Cabin end 'slide' opening window; access for cleaning & ventilation.
- Interior LED light & high mount LED brake light.
- Interior dark grey carpet lining - colour coded to your ute's factory colour code.
- Tinted windows, e-rated auto safety glass & 4 sheet 'hand laid' fiberglass shell.

Nissan Navara NP300 - with Trek Canopy add Pro Rack HD Bars on Cabin & Trek X Bars on Canopy, all bars match in height.



Side Access Options

- Sliding left & right windows - great for ventilation. or
- Lift up left & right windows - best for side access.

Other Options to Consider:

TREK X BARS ON CANOPY: \$285 FITTED.

- Pair of cross bars in place of roof rails.
- 75kg load rated.
- Anodized aluminium.

TREK 4X4 FLAT RACK ON CANOPY: \$475 FITTED.

- 1150mm x 1150mm platform in place of roof rails.
- Galvanized steel, powder coated, satin black & stainless steel fixings.
- 75kg rated.

TREK 4X4 SLIDE/ROLLING FALSE FLOOR: \$1050 (+\$100 FITTING).

****Dual buy discount, \$975 fitted that's a \$175 discount tray slide when purchased with a Trek 4x4 Canopy.**

- Everything is at easy reach, easy access - load & unload gear from the back of your ute.
- Range of lengths available to suit your ute.
- 2 locking positions, 150kg load rated, galvanized steel frame, carpeted ply deck & tied down points.
- Floor extends out 900mm from locked position.

